

## Tower III Water Sculpture

Polished stainless steel self contained water sculpture. Available with a standard (with water supply or large recessed base for garden environments, or a raised base for interiors. Lighting can be either incorporated within the base or supplied for positioning near to sculpture, these can be supplied with an automatic sensor. Tower III is also available in bronze.

Height (above ground): 160 cm.

Diameter (at top): 35cm by 15cm.

Base dimensions (below ground): diameter 41cm, depth 40cm.



## Installation Guide

Installation specification applies to standard base (8 gallon ); size 410 dia with 410 overall depth and large base (25 gallon ); 610 dia, 410 overall depth. It is recommended that a water supply is provided for the standard base as a significant amount of water can be lost through evaporation and wind. We now also supply a canister type water softener, to be fitted to the supply (which will greatly reduce the risk of the pump seizing due to calcium build up (not covered on the pump warranty).

1. In ground; excavate hole to correct size and depth allowing for overall height of concrete footing or slab. (A minimum of 100mm if poured concrete is used or sufficient to properly support a 2inch council type paving slab). Allow for space to adjust leveling bolts. **See drawing T3A.**

### Hole dimensions:

Standard base: depth; (from ground or finished surface level to top of slab) 380. Width approx. 700 dia

Large base: depth; 380. Width approx. 900 dia

2. Position base in hole noting orientation of sculpture to base. Mark through holes identified on drawing as A. Remove base and drill 3 off holes with 10mm dia drill to accept expanding anchors.
3. Dig and lay suitable conduit to accept cables for pump (and lighting if specified). Consult a qualified electrician to ensure these conform to all relevant safety standards. A RCCB must be fitted. (Apertures in base to accept cable glands are 20 mm dia x 2). If a water supply is being laid to the sculpture this should terminate with a ½" BSP elbow, to attach to the Torbek valve supplied (ensure that pipe is thoroughly flushed through prior to fitting valve. Water supply must conform to water companies byelaws).Fit water softener; (follow instructions carefully re orientation) at a point nearest to supply.
4. Insert expanding anchors and install base into hole.
5. Install pump (and lighting if specified ) feeding cables through glands K. This must be carried out by a qualified electrician and conform to the technical specification in the pump and lighting instructions. Allow sufficient cable within base to enable removal of pump for servicing. Tighten glands by hand. An earth tab connecting point C is fitted to the base.
6. Install sculpture, connect hose to tail D, install M8 stainless nuts E and tighten. Level sculpture top in both directions by adjusting bolts F. Remove protective black film. Check level by filling base with water and running sculpture, adjust valve to achieve desired flow rate of water over sculpture. When satisfactorily level tighten locknuts G then screw down bolts H until they just make contact with foundation. (Do not over tighten) followed by locknuts. Finally secure base by fitting and tightening nuts on anchors.
7. Replace bronze covers.

**Art in The Landscape Ltd** Old Aerodrome Farm Cowcombe Lane Aston Down Gloucestershire GL6 8HR

Tel 01285760880 Fax 01285760881 Email [simon@artinthelandscape.com](mailto:simon@artinthelandscape.com)

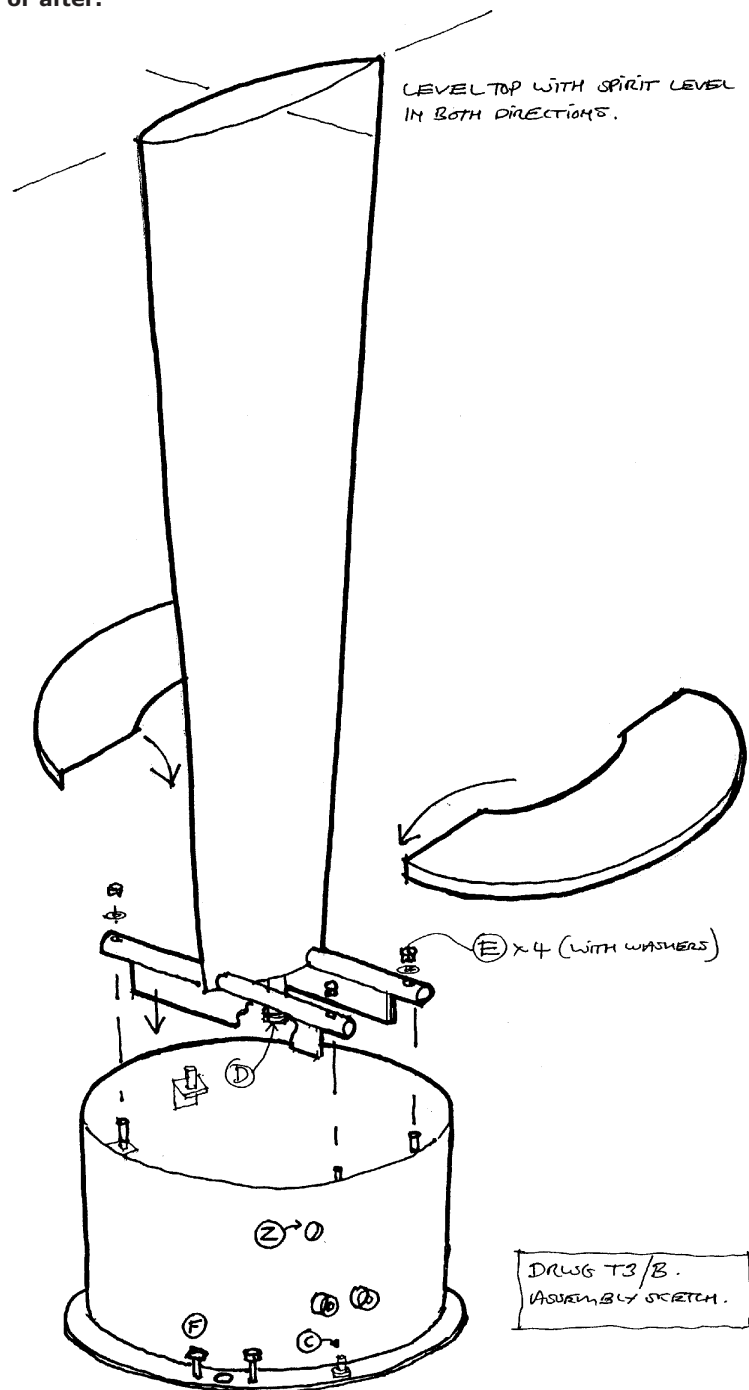
Registered in England No 3859288 VAT No 742218256

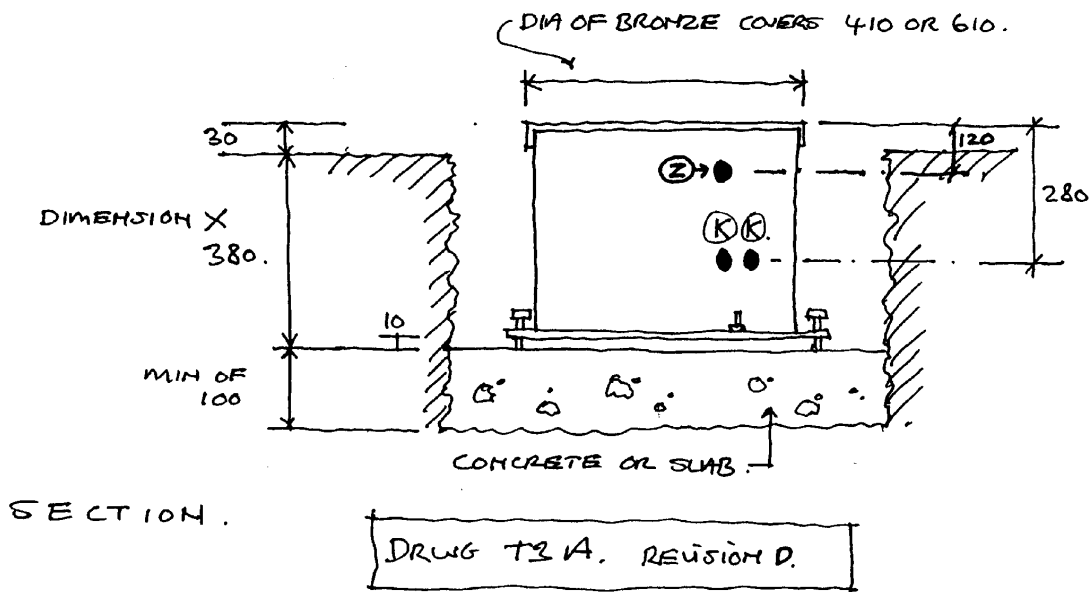
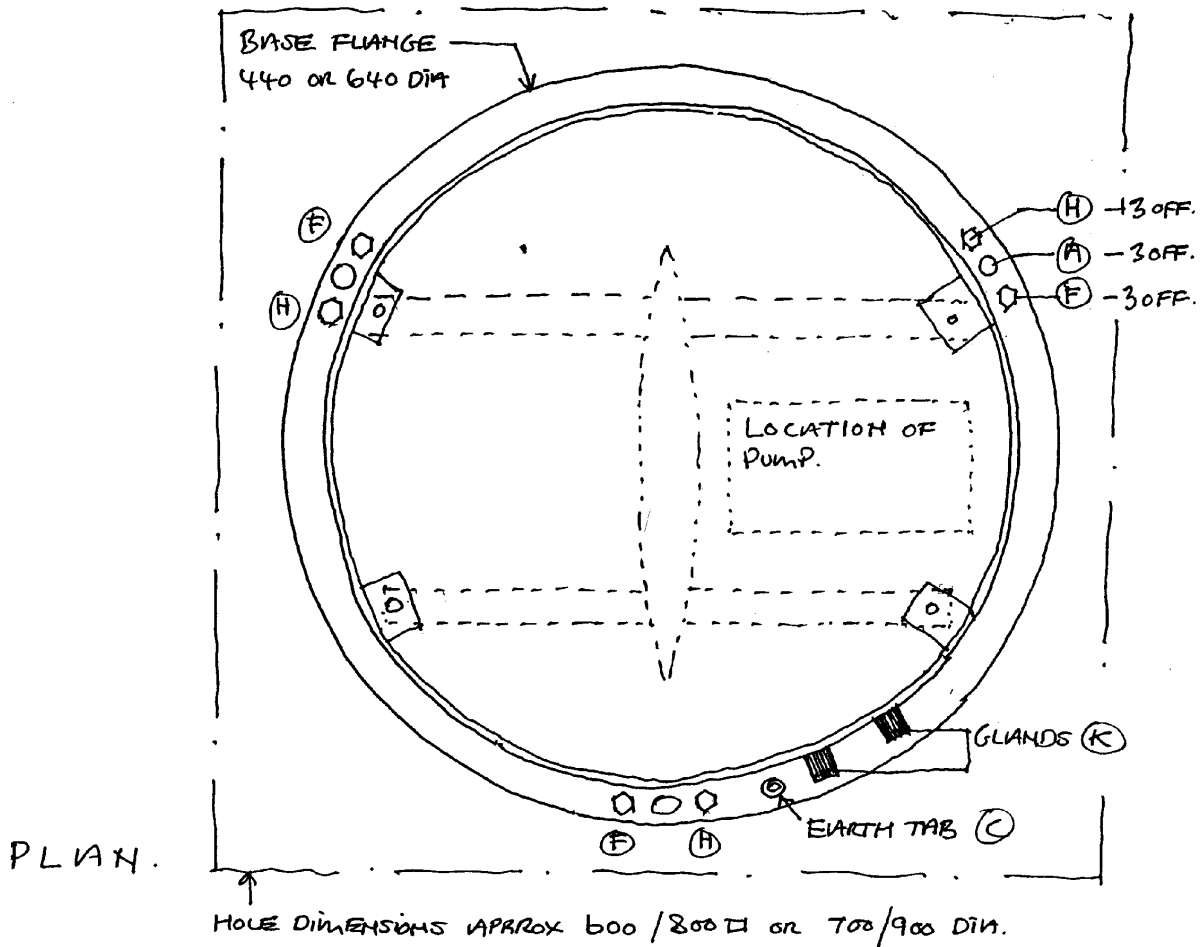
**Pump type:** Blagdon Amphibious 8000; power consumption 178 watts 240v. OR; OASE 4000 ; power consumption 70 watts.

**Lighting:** Oase Lunaqua 2; power consumption 50 watts 12v. Please note that the transformer must be located above ground and within 4.5 metres of the feature.

**Ballcock:** ½ inch BSP male thread. If required fit to hole marked z on base, ensure cables do not foul.

**If installation is to be carried out by ourselves stages 1, and 3 must be carried out prior to delivery/installation and an electrician will be required to make the electrical connection, either at the time of delivery or after.**





## Tower III Water Sculpture

### Unpacking Guide

1. Do not place black protected top element of sculpture in strong direct sunlight (protective film will get very hot and stick to the stainless surface).
2. Follow the Installation Guide for setting up the Tower.
3. If you have a bronze Tower avoid touching surface of bronze as this can leave fingerprints.

### Maintenance Guide

#### **Bronze Covers and Bronze Tower**

These will weather naturally over an initial period of approx 1 - 2 weeks, to a darker brown colour. If the Tower is run continuously this will delay the natural oxide from forming and the bronze will retain a more copper like appearance.

#### **Polished Stainless Tower**

Most deposits from the water flow can be removed with a soft cloth and washing-up liquid. **Do not use any abrasive cleaners ( e.g. Ajax), scourers etc as these will permanently scratch the surface.**

#### **Limescale**

If limescale appears on the surface ( which may happen in very hard water areas where water softeners are not fitted) use a proprietary descaling product like Viacal carefully applied / sprayed onto surface and rinsed off with water. Its reappearance can be retarded by adding a small amount of CALGON or its equivalent to the water.

#### **Algae**

Algae may appear in water depending on the location of the sculpture. Chlorine tablets added to the water will eliminate the problem.

#### **Pump removal**

Do not allow pump to run dry as this will damage the pump bearings and invalidate the pump warranty. To remove pump undo connecting hose from feature and then the pump, take off filter (pulls off) then pump can be removed by tilting through legs of the feature.

#### **Winterisation**

If water freezes inside the pump it will be irreparably damaged.

Therefore if no lights are fitted to the Tower and freezing is a possibility it is advisable to drain base (and water feed if ballcock is fitted ) and lift pump out of the water. If the Tower is located in an area which does not have severe frosts and lighting is fitted and used nightly the lights will warm the water sufficiently to reduce the hazard of frozen pumps.